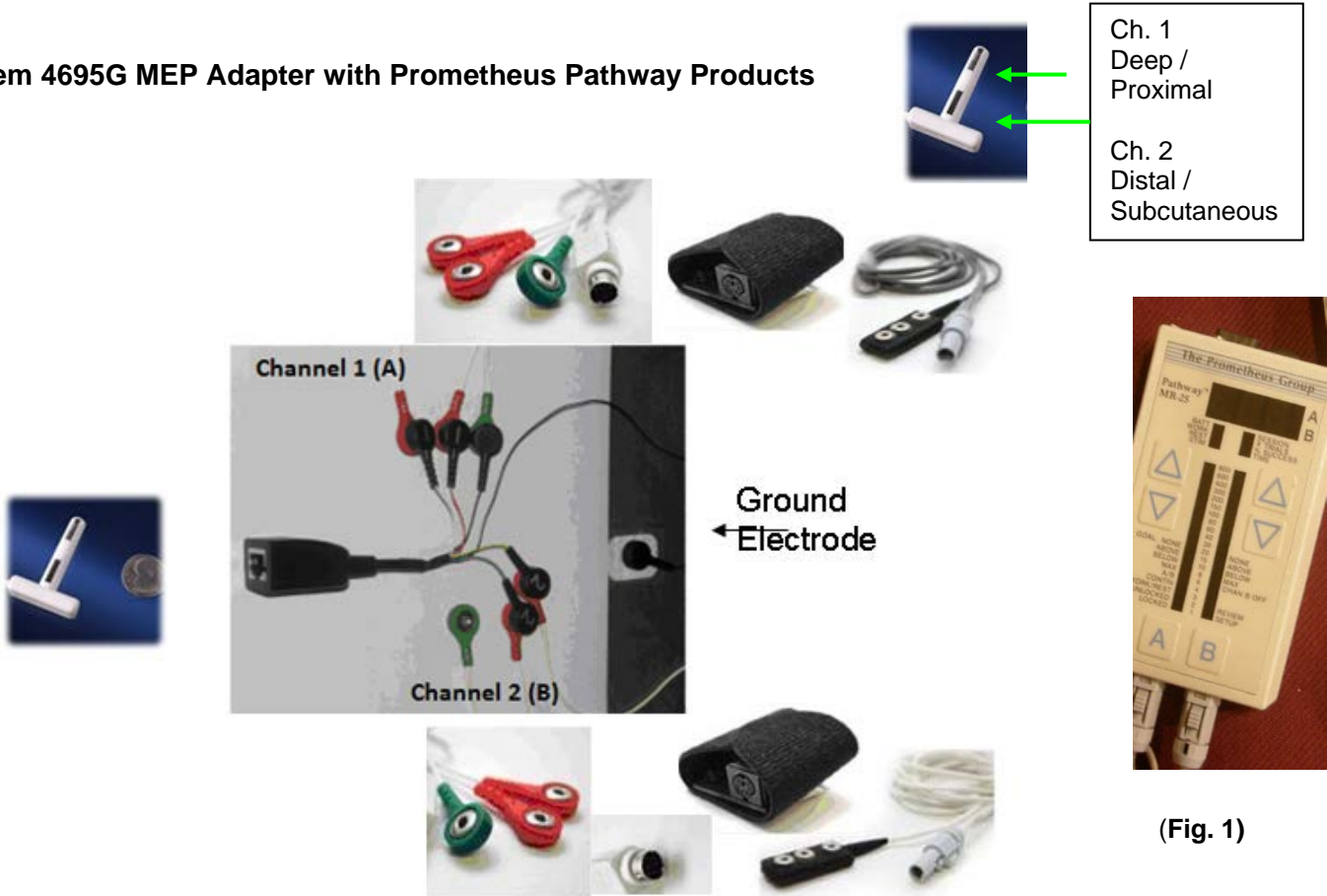


**Connection between the MEP Adapter (old and new style) with  
The Prometheus Pathway products (Fig.1 and 3)  
and Thought Technology, Ltd. Myotrac Infiniti, Myotrac 3, Procomp (Fig. 2)**

**MR Series Biofeedback & MEP Sensor**

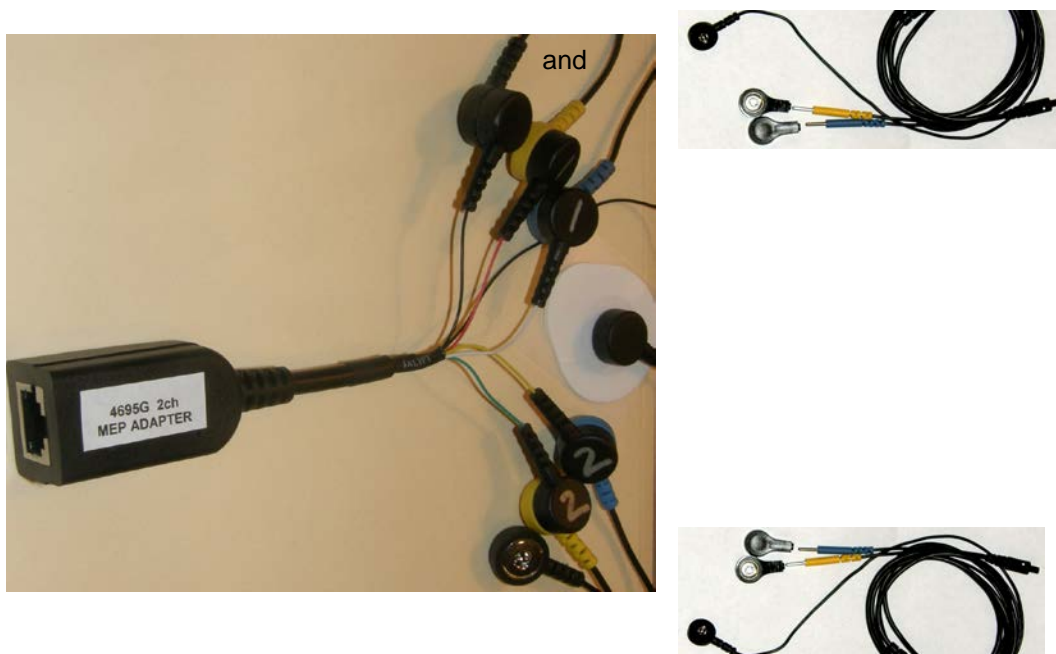
2 (black) adapters, #3660 w/ 2 sets of extender cables #5328 w/ MEP Adapter #4695G, w/ MEP Sensor, #4520

**Item 4695G MEP Adapter with Prometheus Pathway Products**



**(Fig. 1)**

**Item 4695G MEP Adapter with Thought Technology, Ltd. Products**



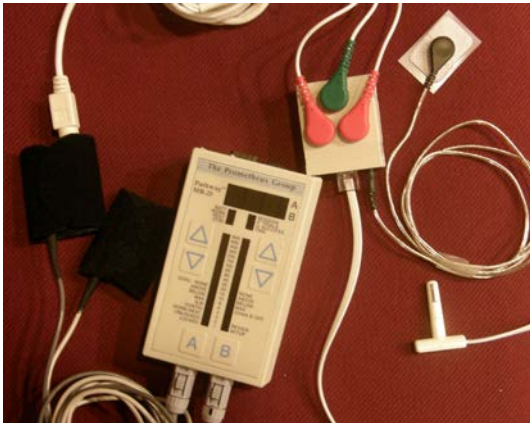
2 ea. #T9801 cables  
w/ #4695G MEP Adapter  
MEP Sensor #4520



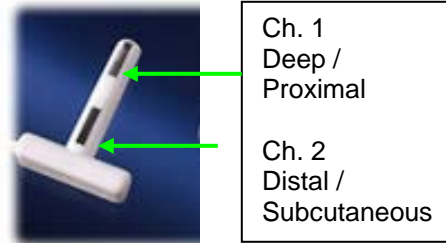
**(Fig. 2)**

Myotrac 3 will use 2 ea. T8820 cables, ProComp will use the T8710 or T8720 extender cables on their EMG MyoScan Sensors

**Item 4695 MEP Adapter (no longer available)**



**(Fig. 3)**



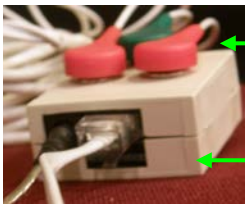
Ch. 1  
Deep /  
Proximal

Ch. 2  
Distal /  
Subcutaneous

**MR Series Biofeedback & MEP Sensor**

- Grey = A / Channel 1
- White = B / Channel 2
- w/ 2 (black) adapters, #3660
- w/ 2 sets of extender cables (only one shown), #5328
- w/ MEP Adapter (snaps on both sides), 4695L
- w/ MEP Sensor, #4520 and ground cable

**MEP Adapter**



Ground is to the left of the MEP jack

**Channel 1  
Deep / Proximal**

Snap attachment  
Not shown:  
**Channel 2  
Distal /  
Subcutaneous**



Orientation for the MEP Connection to the adapter:  
Tel-Con "clip" facing the floor.  
(Straight edge toward Channel 1)

Current Technology, Inc.  
Minneapolis, MN  
800-322-4461